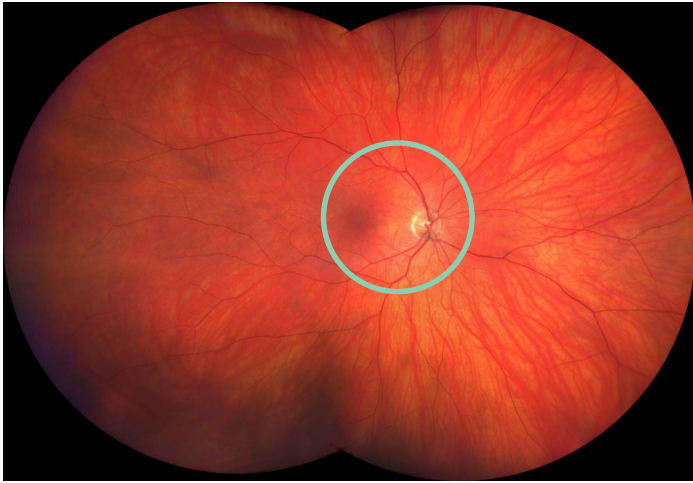


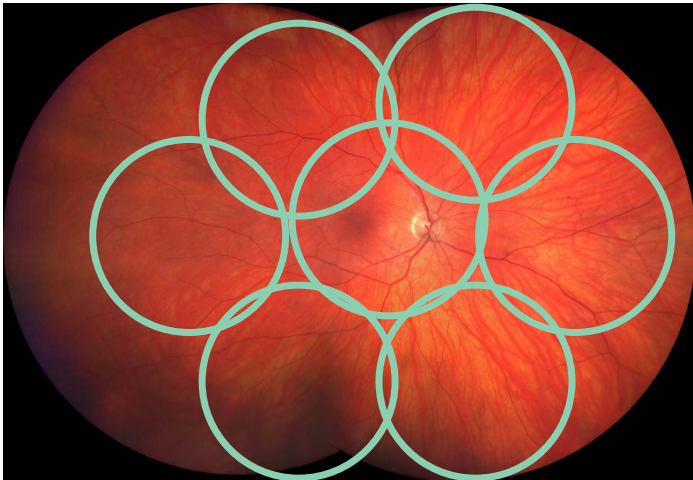
Assessing the Internal Eye

Undilated View



The green circle on the image shows the best case scenario of what the doctor is able to see during an undilated exam of the eye. If you choose to have an undilated exam, the doctor will not be able to view a significant portion of the internal eye structures, limiting his ability to assess the overall health of the eyes.

Dilated BIO View



The green circles on the image show what the doctor is able to see during a dilated exam of the eye when using a Binocular Indirect Ophthalmoscope (BIO). The doctor will use eyedrops to dilate your eyes then use the BIO to gather multiple views of the internal structures of the eyes.

Undilated Clarus View



This image shows the view provided by the Clarus camera. The Clarus provides the doctor with 200 degree views of the retina in true color and dilation is not required. Furthermore, the image becomes part of your medical record allowing for early detection of subtle changes from year to year.